

1372

SUNCADIA - PHASE 3 DIVISIONS 15 AND 16 (TUMBLE CREEK)

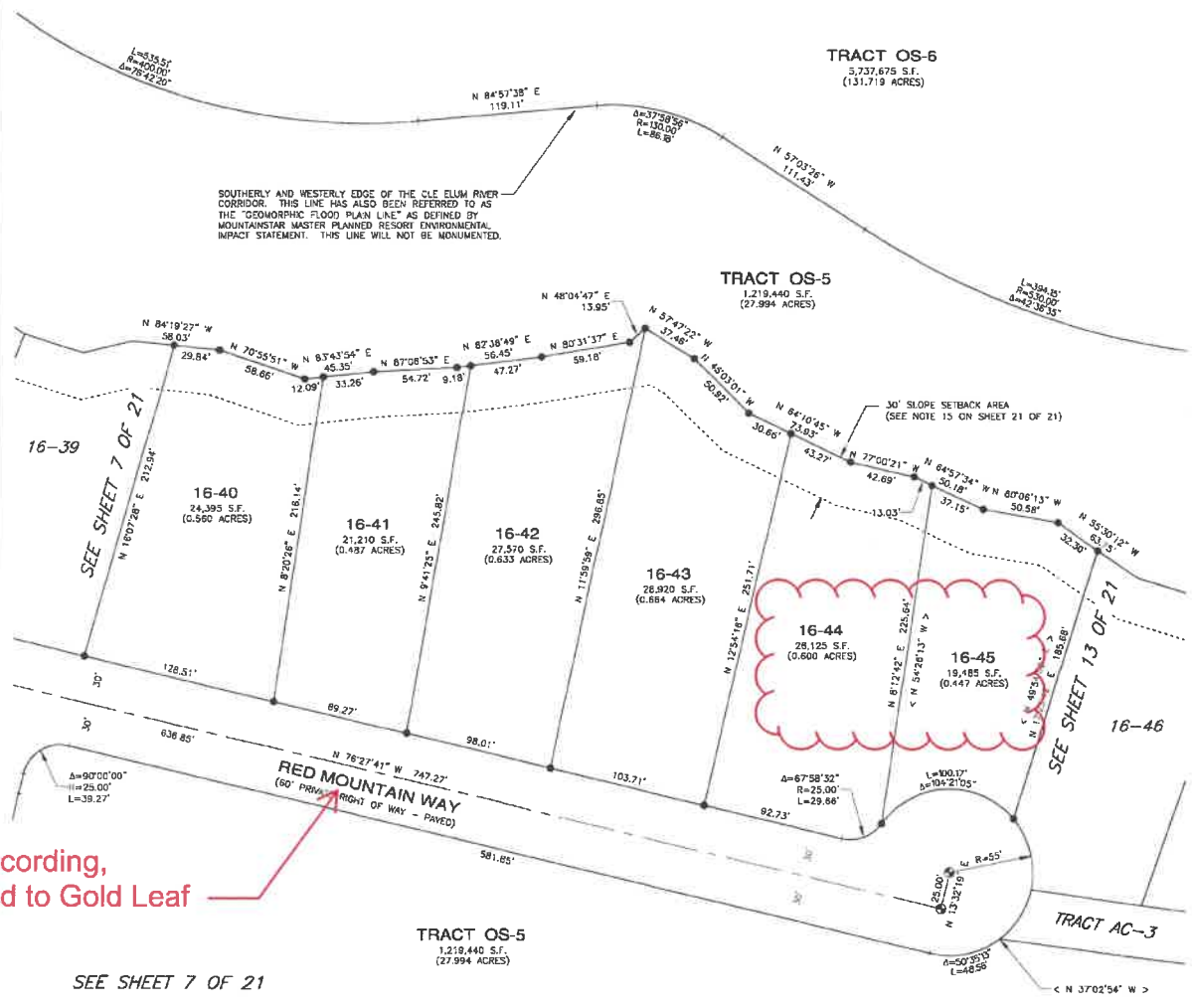
A PORTION OF SECTIONS 14 AND 15, T. 20 N., R. 14 E., W.M. KITTITAS COUNTY, WASHINGTON

ASSESSOR MAP NUMBERS 20-14-14000-0001, 20-14-14000-0002, 20-14-14000-0009 AND 20-14-14000-0010

11/05/2019 11:07:23 AM V: 13 P: 72 201911050010
2119.04
SUNOV010
Kittitas County Auditor

LP-19-00002
LPF-19-00008

SEE SHEET 2 OF 21



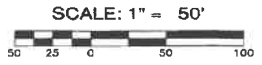
After recording,
changed to Gold Leaf
Lane

SEE SHEET 7 OF 21

SEE SHEET 8 OF 21



- LEGEND**
- ⊙ = SET SURFACE BRASS CAP, STAMPED "LS 44925"
 - ⊙ = SET 5/8" REBAR WITH CAP STAMPED: "ESM LLC 44925 45782". IN THE EVENT THAT A NON-REMOVABLE OBSTACLE PREVENTS SETTING THE ACTUAL PROPERTY CORNER, A STAMPED 2" ALUMINUM CAP WILL BE SET ON THE PROPERTY LINE AS AN OFFSET TO THE ACTUAL CORNER WITH THE DISTANCE TO THE ACTUAL CORNER NOTED THEREON.
 - Δ = DELTA
 - R = RADIUS
 - L = ARC LENGTH
 - () = RADIAL BEARING
 - < > = RADIAL BEARING AT LOT CORNER
 - OS-1 = OPEN SPACE TRACT - DESIGNATION NUMBER



RECORDING CERTIFICATE

FILED FOR RECORD AT THE REQUEST OF KITTITAS COUNTY BOARD OF COMMISSIONERS, THIS 24 DAY OF NOVEMBER, A.D. 2019, AT 3 MINUTES PAST 11 O'CLOCK P.M., AND RECORDED IN VOLUME 19 OF PLATS, ON PAGES 59-72 RECORDS OF KITTITAS COUNTY, WASHINGTON.

By: John Smith Deputy County Auditor
Jerald V. Pettit Kittitas County Auditor

AUDITOR'S REFERENCE: 20191105010

ESM CONSULTING ENGINEERS LLC
 33400 8th Ave. S, #205
 Federal Way, WA 98003
 www.esmcivil.com

Civil Engineering | Land Surveying | Land Planning
 Public Works | Project Management | Landscape Architecture

DATE: 2018-10-04 | JOB NO. 998-785-017-0003
 DRAWN BY: C.A.F./R.F.G. | SHEET 14 OF 21

DWG NAME: \\ESM\ENGR\ESM-JOB\998\718\016\SURVEY PLOTS\P3D15-FP-14.DWG

RECEIVED
 JAN 28 2021
 Kittitas Co. CDS